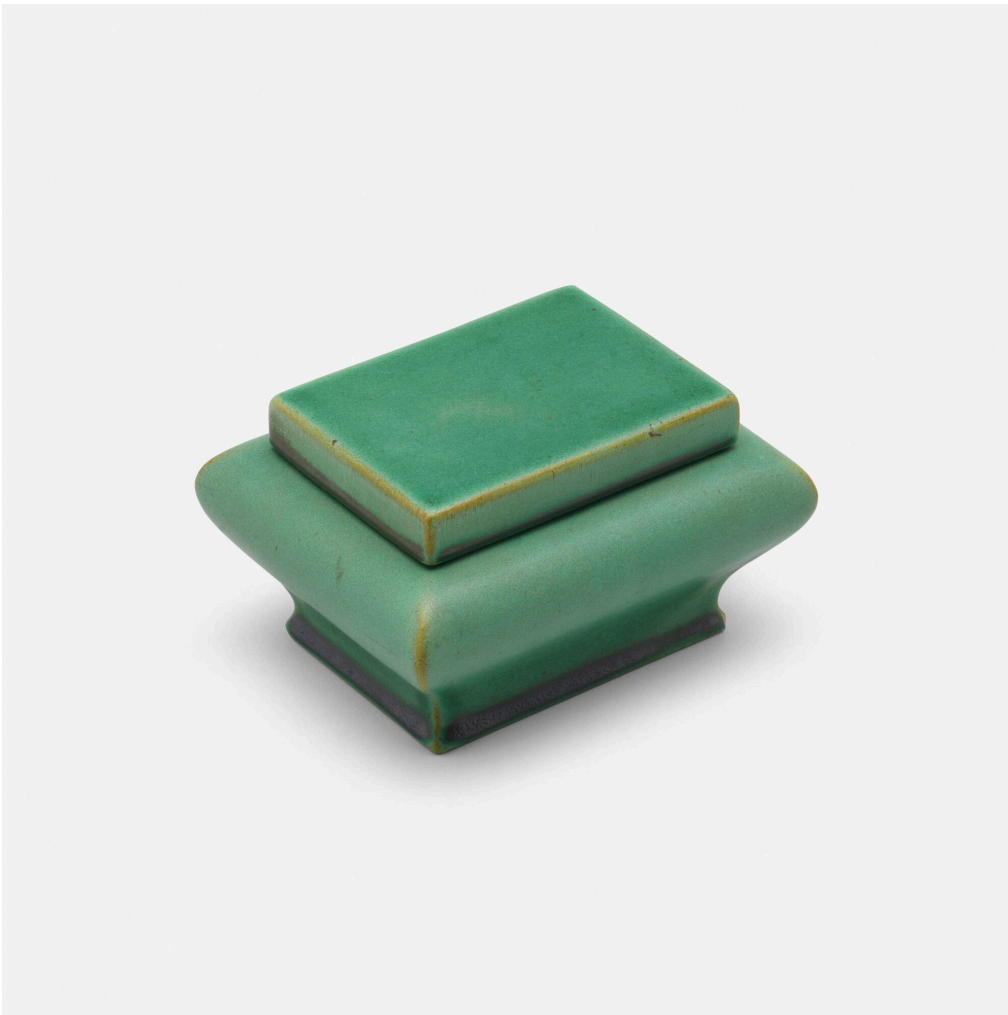


# EARLY 20TH CENTURY DESIGN



## Auction

14 June 2023

11:00 am ct

## Toomey & Co.

1440 West Hubbard Street

Chicago IL

t 312 563 0020

f 312 563 0040

[toomeyco.com](https://toomeyco.com)

[bid@toomeyco.com](mailto:bid@toomeyco.com)

## 173

### N.L. CLARK FOR TECO POTTERY

#### Match box, model 384

USA, c. 1904 | glazed earthenware

2⅝ h × 4½ w × 3½ d in (7 × 11 × 9 cm)

Impressed manufacturer's mark to underside of box and lid 'Teco'.

**Provenance:** Private Collection | Thence by descent

**Literature:** *Teco: Art Pottery of the Prairie School*, Darling, pg. 155

**Estimate:** \$300–500

**Result:** \$459

